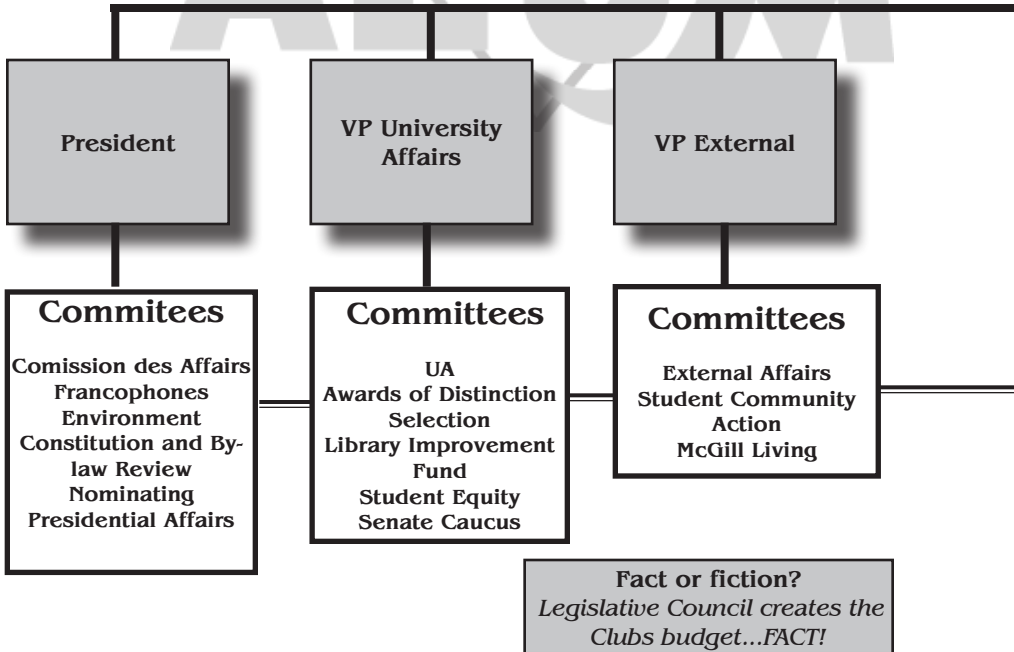


# HOW SSMU WORKS

*Below is a flow chart outlining the decision making process at SSMU. The six executives work with general manager to oversee the workings of SSMU on a daily basis (alongside permanent staffers). Decisions passed in executive committee must be approved by the Legislative Council. Any decision dealing with money over \$15,000 must go to the Legislative Council. Each executive oversees a number of committees that assist in decision making and forward recommendations to council. Alongside council, General Assemblies exist as an independent decision making body.*



**A note on elections...**  
If you're interested in running for an executive position, you should contact Elections McGill for up-to-date information ([www.electionsmcgill.ca](http://www.electionsmcgill.ca)). Elections usually take place in late February or early March. To run you must be nominated by 100 students, filling specific faculty quotas. Forms can also be found on the Elections McGill website.

### ***Legislative Council***

Council is made up of representatives from each faculty (determined by faculty size), an athletics representative, three Senators, three C&S representatives, six SSMU executives, and the General Manager. Council must approve all referenda questions for SSMU and make big policy and financial decisions (like the budget). The SSMU Committees also report here, helping to guide decision making.

### ***Speaker of Council***

The speaker is responsible for the smooth functioning of council, using Roberts Rule of Orders, they are an impartial guide of debate,

### ***Executive Committee***

The six executives and the General Manager sit on this committee. Day-to-day operational decisions are made here, and larger scale projects are decided upon.

### ***General Assemblies***

GAS occur once a semester to allow members of SSMU (all undergraduate students) to pass or fail motions (that will not effect SSMU financially or constitutionally) that are submitted by SSMU members. Motions passed become official policy of SSMU.

VP Internal

VP Finance

VP Clubs and Services

#### **Committees**

Internal Students' Society  
Programming  
Network

General Manager

#### **Committees**

Financial  
Budget  
Operations  
Investment  
Financial Ethics  
Review

#### **Committees**

C&S  
Safety Network  
Media Board  
QPIRG Board  
Building

To learn more about SSMU committees, visit [www.ssmu.mcgill.ca](http://www.ssmu.mcgill.ca)