

Ⓟ = volunteer  
 Ⓜ = agent

Ⓟ Ⓜ



A-SS01  
 1379.30m<sup>2</sup>  
 172-A  
 Main Wing

Revision	Description
Apr 12	09-16-001 - Gerl's Bar
June 10	FAMIS Conversion
May 11	Rm B25A, B09A & Gerl's
Ocl 15	Survey Update

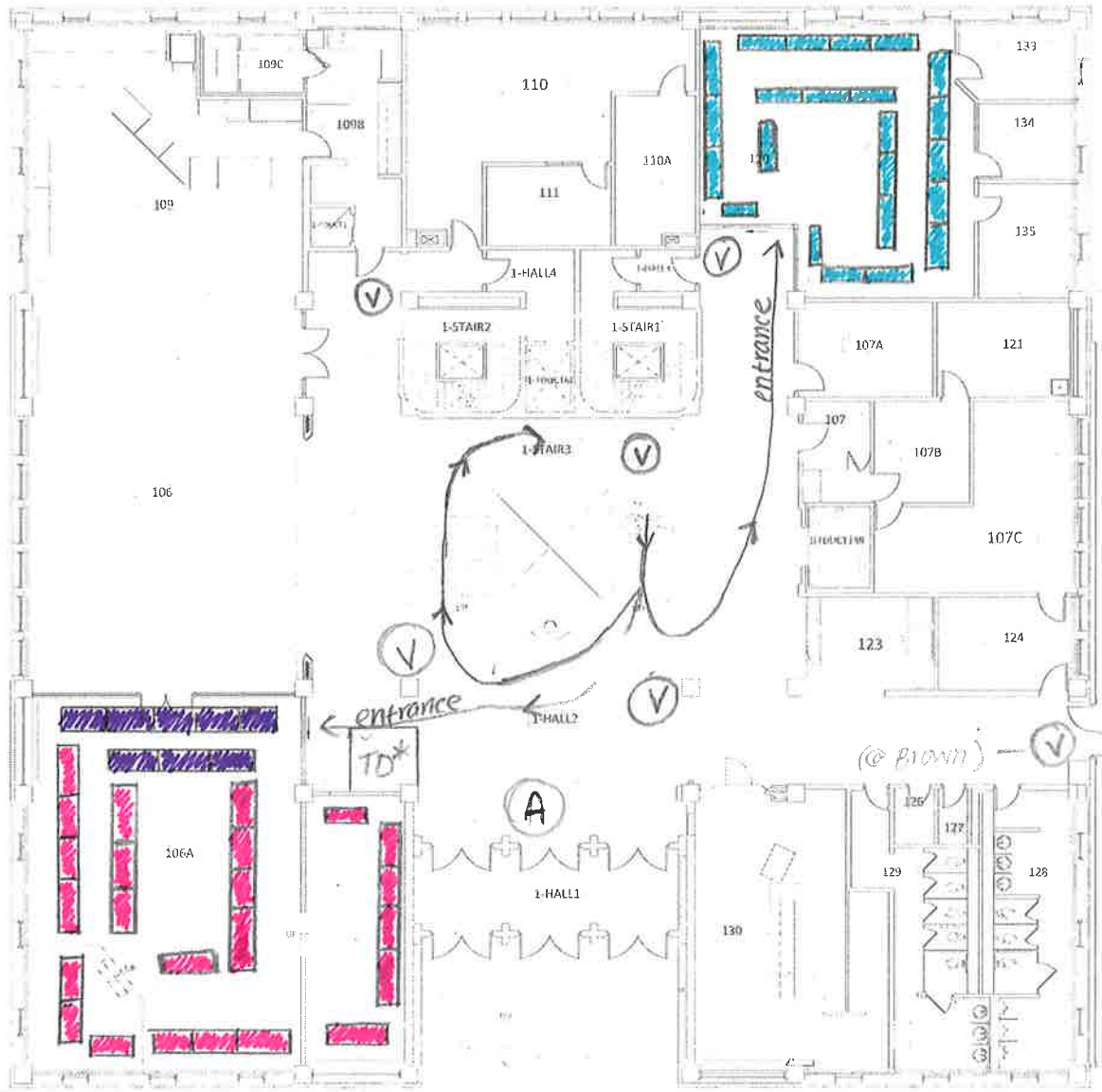


**UNIVERSITY Centre**  
**1st Basement**

total volunteers: 4

total agents: 1

Building Code	172
Floor Code	SS01
VP Scale	1:244 non-standard
Campus & Space Planning Planification des campus et des espaces	



Room 108  
(23 tables)

Ⓟ = volunteer

Ⓐ = Agent

\* TD BANK (sponsor)

🟡 = Language + Publications (8)

🟠 = Leisure Activities + Hobbies (24)

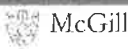
🟢 = Athletics + Recreation (23)

Student Lounge  
(32 tables)



A-0001  
1343.40m<sup>2</sup>  
172-A  
Main Wing

Revision	Description
Jan 10	Renov Update
June 10	FAMIS Conversion
Apr 12	11-300 - Rms. 123/124
Jan 13	Room 109 caf prep counters



### UNIVERSITY Centre

1st Floor — total tables : 55

— total Agents : 1

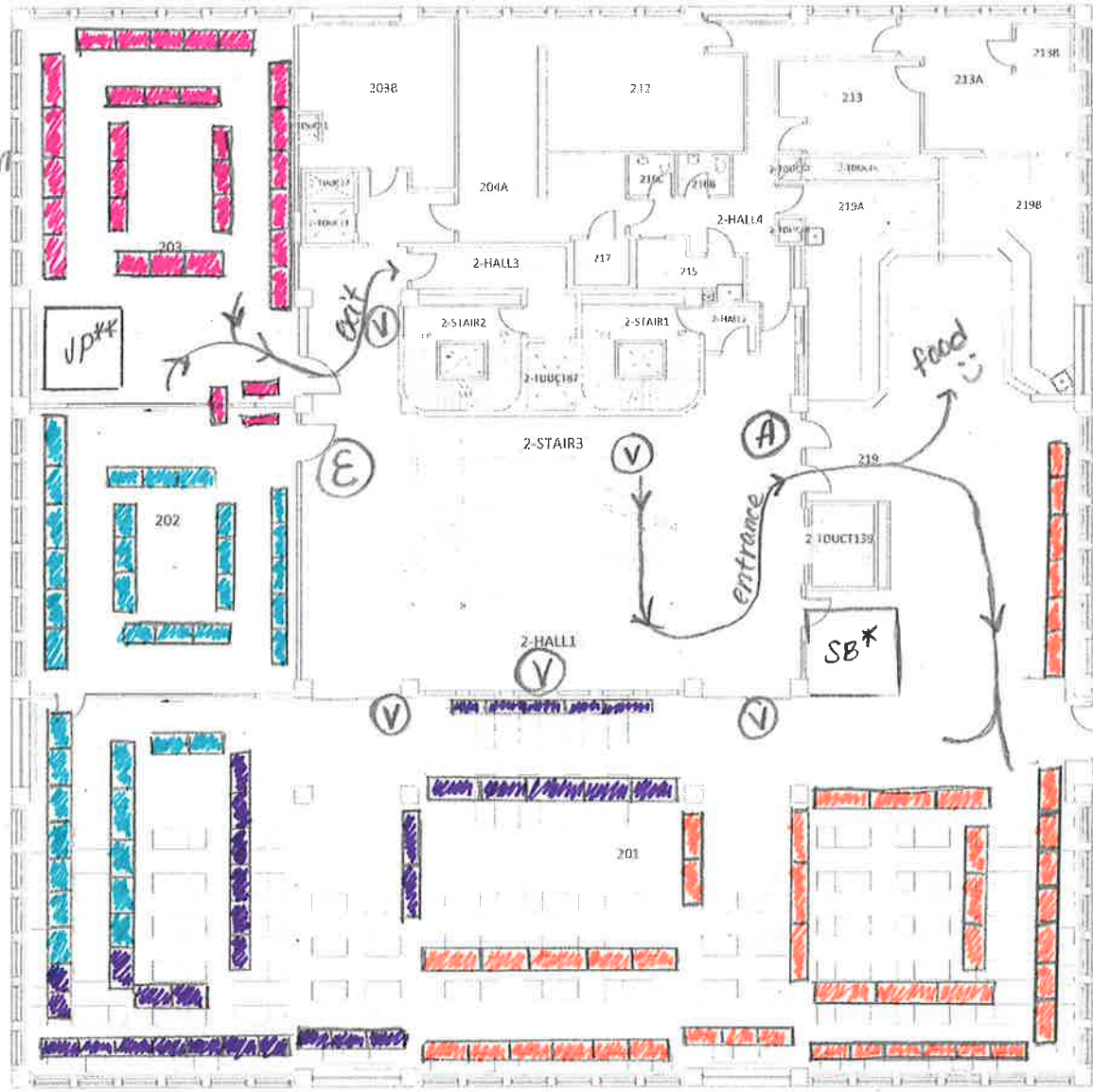
— total volunteers : 6

Building Code	172
Floor Code	0001
VP Scale	1:235 non-standard
Campus & Space Planning Planification des campus et des espaces	

Lev Bukhman  
(31 tables)

Madeline Parent  
(23 tables)

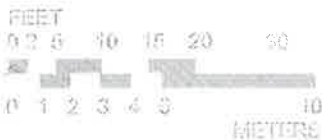
Cafeteria  
(94 tables)



- Ⓟ = volunteer
- Ⓐ = Agent
- Ⓔ = executive

\* Scotia Bank  
\*\* Jansport

- = Community Outreach + Volunteering (31)
- = Charity + Environment (37)
- = Performing + Fine Arts (33)
- = Religion + Culture (48)



A-0002  
1372.26m<sup>2</sup>  
172-A  
Main Wing

Revision	Description
July 11	Survey Updates
Oct 15	Survey Updates
Jan 12	Food Services area surveyed
Jan 13	Wall removed Rm. 203B & small wall add.



## UNIVERSITY Centre

2nd Floor — total tables: 148

— total volunteers: 5

— total Agents: 1

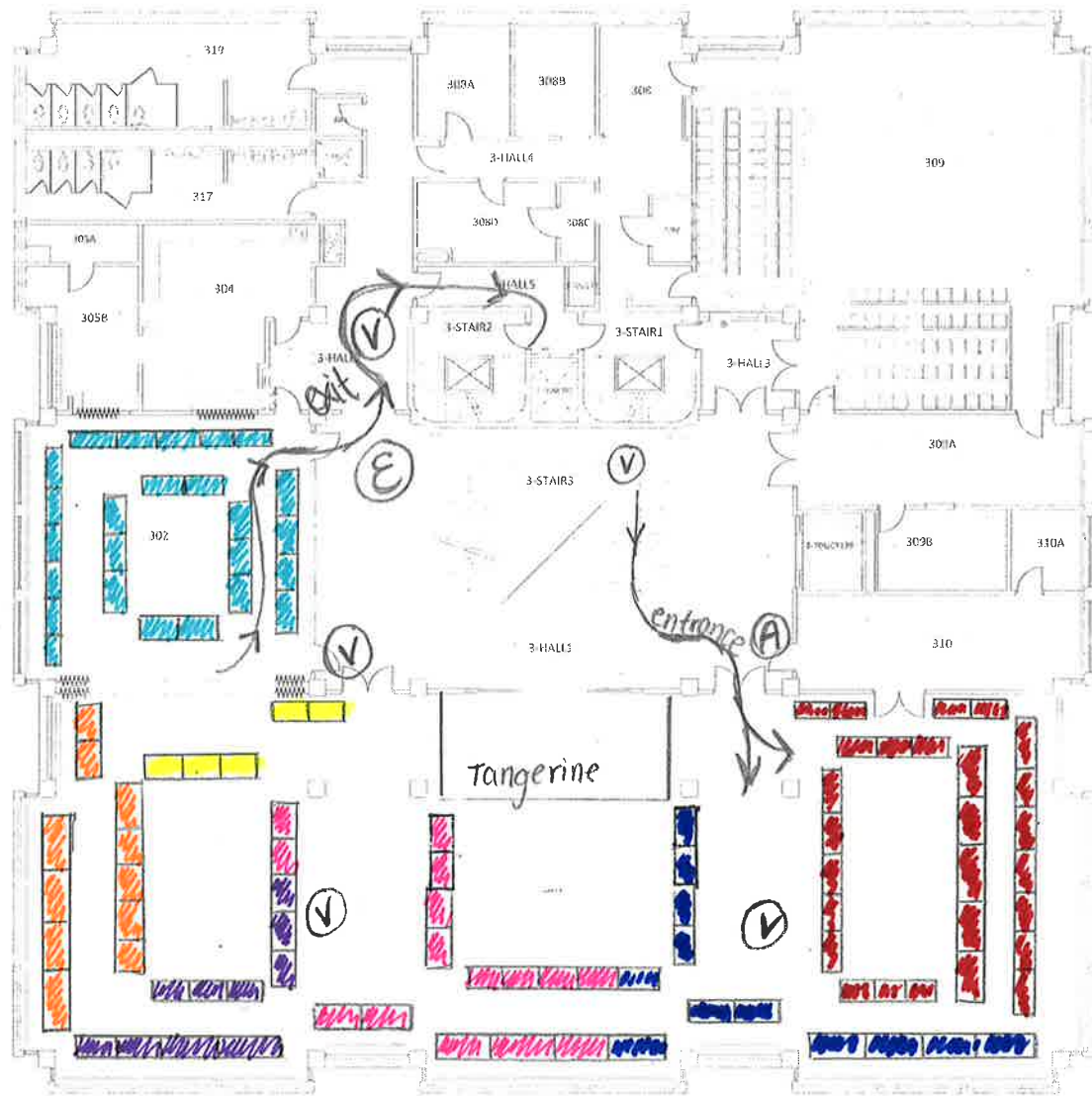
— total Execs: 1

Building Code 172  
Floor Code 0002  
VP Scale 1:233 non-standard

Campus & Space Planning  
Planification des campus et des espaces

Room 302  
(25 tables)

Ballroom  
(80 tables)



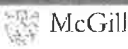
- (V) = volunteer
- (A) = Agent
- (E) = Executive
- ▨ = Networking + Leadership development (25)
- ▨ = Student Associations (11)
- ▨ = McGill Student Services (10)
- ▨ = SSmu Services (15)
- ▨ = Health + Wellness (12)
- ▨ = Political + Social Activism (27)
- ▨ = Greek Life (5)



A-0003  
1470.35m<sup>2</sup>  
172-A

Main Wing

Revision	Description
June 10	FAMIS Conversion
July 11	Rm 309,308C,304(A,B)
Jan 12	FieldPro Updates
Oct 15	Survey Update / Washrooms



### UNIVERSITY Centre

3rd Floor - total tables: 105 total agents: 1

- total volunteers: 5 total execs: 1

Building Code	172
Floor Code	0003
VP Scale	1:242 non-standard
Campus & Space Planning Planification des campus et des espaces	